

## Thrilling Twills: 8 Shaft M's and W's

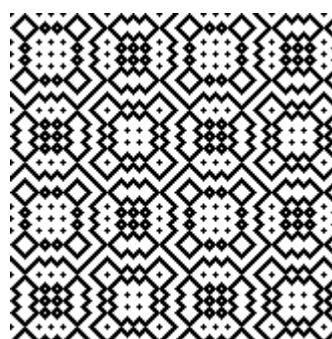
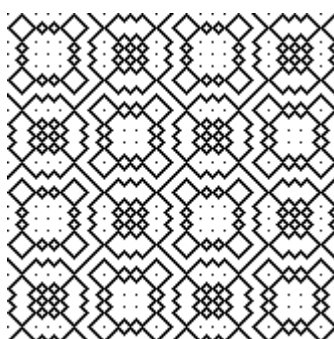
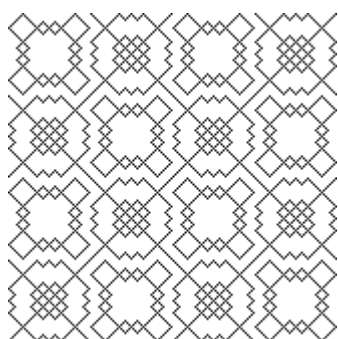
[back to catalog](#)

This folder contains 8 shaft M's and W's drafts in 2 formats. The \*.dtx files are the native file format for Fiberworks PCW4. The \*.wif files are WEAVING INTERCHANGE FORMAT files which can be opened in most modern weaving software, including Fiberworks.

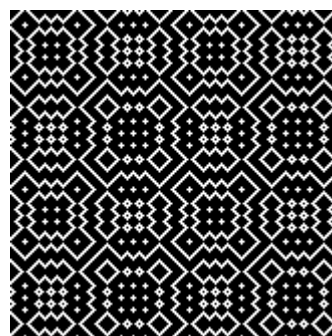
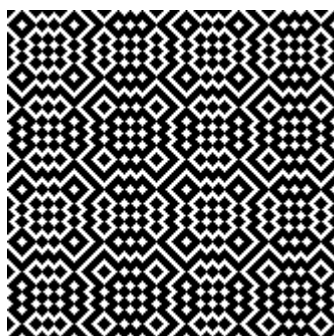
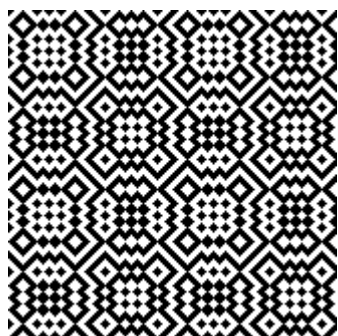
With some weaving software, you may click on the name of the file, the weaving software associated with the file type (on your computer) will launch the software and open the file. On other systems, it may not.

This method works on most Windows systems: Note name of designs you wish to open. Open your weaving software and using File/Open, navigate to that file and open it.

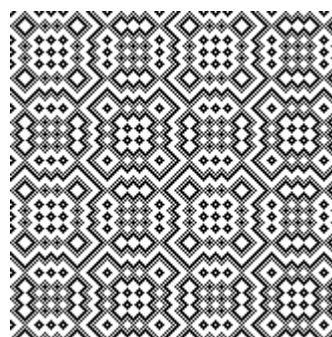
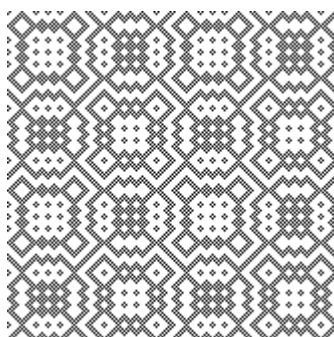
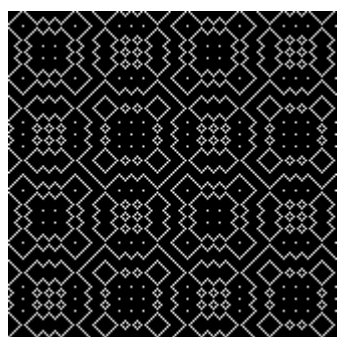
[08sG001.dtx](#) [08sG001.wif](#) [08sG002.dtx](#) [08sG002.wif](#) [08sG003.dtx](#) [08sG003.wif](#)



[08sG004.dtx](#) [08sG004.wif](#) [08sG005.dtx](#) [08sG005.wif](#) [08sG006.dtx](#) [08sG006.wif](#)



[08sG007.dtx](#) [08sG007.wif](#) [08sG008.dtx](#) [08sG008.wif](#) [08sG009.dtx](#) [08sG009.wif](#)



## Thrilling Twills: 8 Shaft M's and W's

[back to catalog](#)

[08sG010.dtx](#)

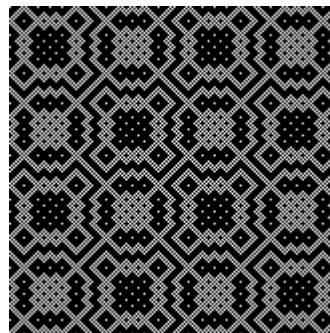
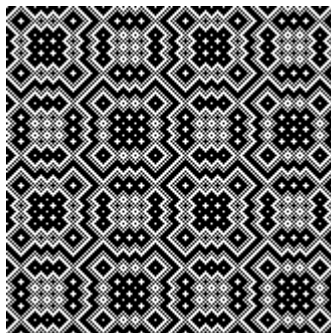
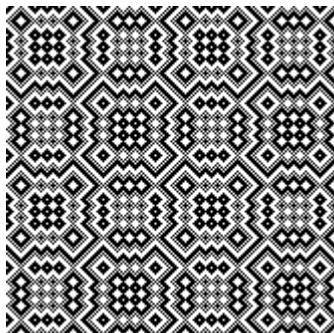
[08sG010.wif](#)

[08sG011.dtx](#)

[08sG011.wif](#)

[08sG012.dtx](#)

[08sG012.wif](#)



[08sG013.dtx](#)

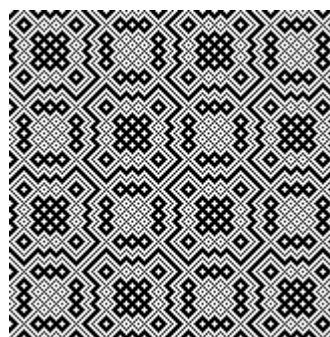
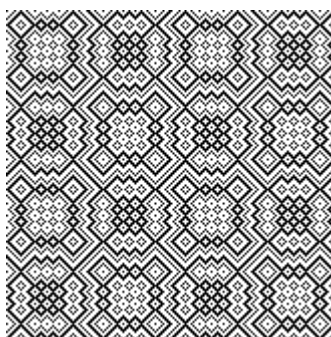
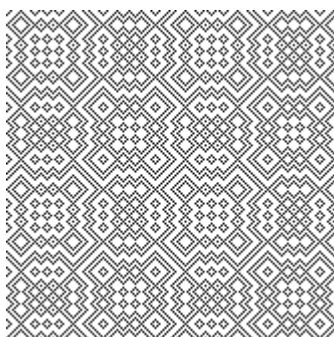
[08sG013.wif](#)

[08sG014.dtx](#)

[08sG014.wif](#)

[08sG015.dtx](#)

[08sG015.wif](#)



[08sG016.dtx](#)

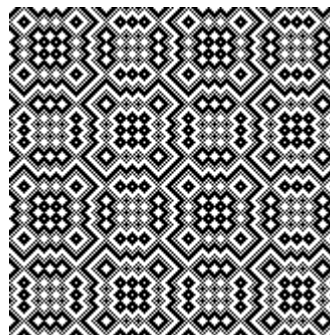
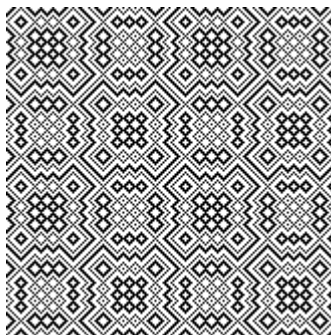
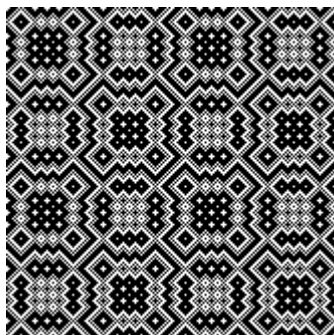
[08sG016.wif](#)

[08sG017.dtx](#)

[08sG017.wif](#)

[08sG018.dtx](#)

[08sG018.wif](#)



[08sG019.dtx](#)

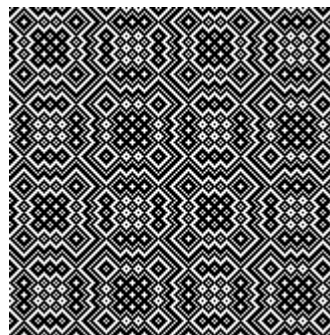
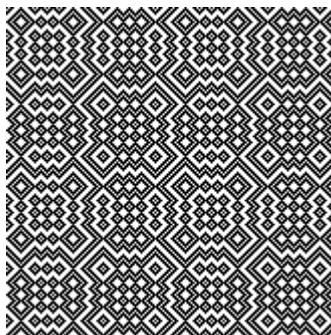
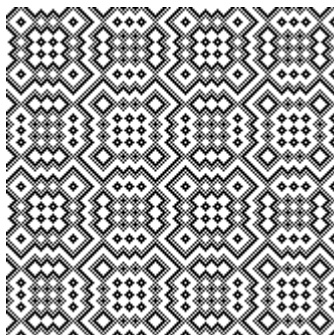
[08sG019.wif](#)

[08sG020.dtx](#)

[08sG020.wif](#)

[08sG021.dtx](#)

[08sG021.wif](#)

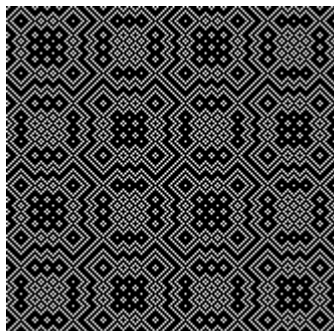




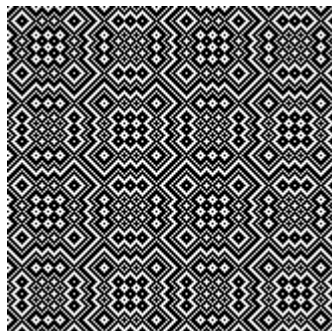
## Thrilling Twills: 8 Shaft M's and W's

[back to catalog](#)

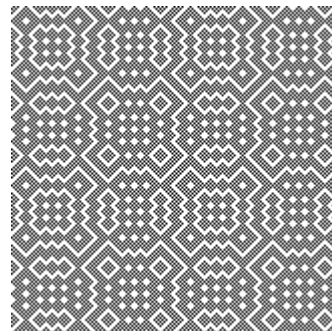
[08sG022.dtx](#) [08sG022.wif](#)



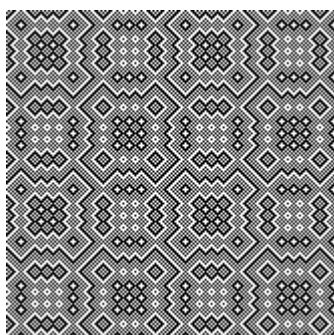
[08sG023.dtx](#) [08sG023.wif](#)



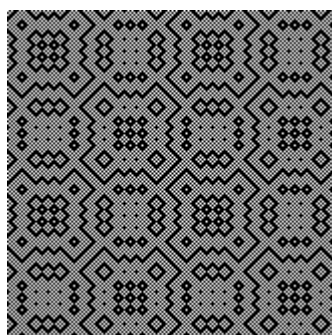
[08sG024.dtx](#) [08sG024.wif](#)



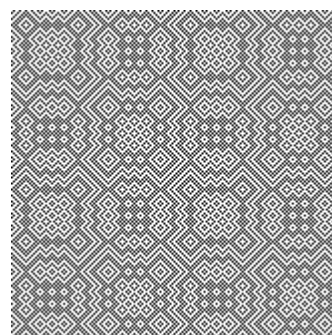
[08sG025.dtx](#) [08sG025.wif](#)



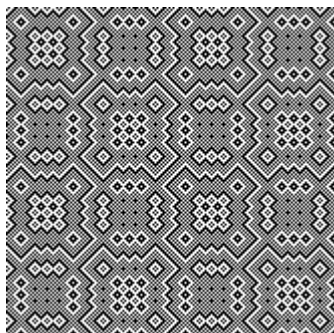
[08sG026.dtx](#) [08sG026.wif](#)



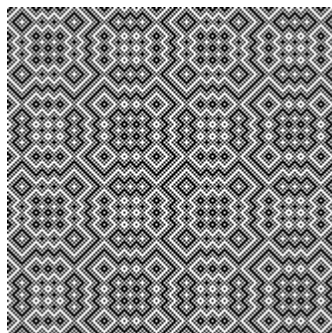
[08sG027.dtx](#) [08sG027.wif](#)



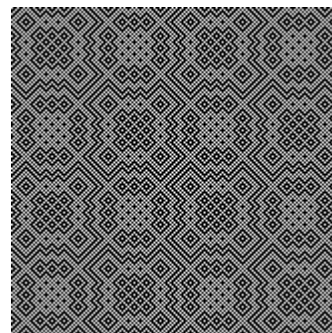
[08sG028.dtx](#) [08sG028.wif](#)



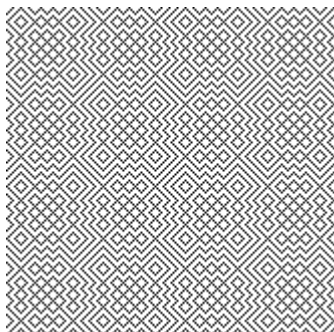
[08sG029.dtx](#) [08sG029.wif](#)



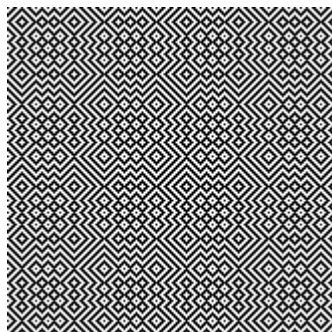
[08sG030.dtx](#) [08sG030.wif](#)



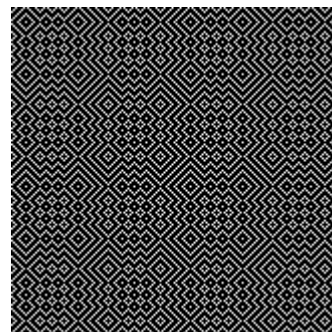
[08sG031.dtx](#) [08sG031.wif](#)



[08sG032.dtx](#) [08sG032.wif](#)



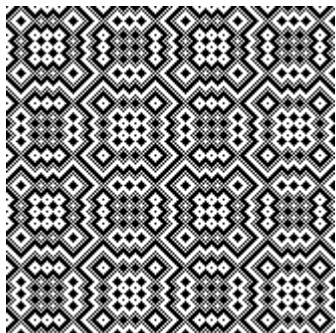
[08sG033.dtx](#) [08sG033.wif](#)



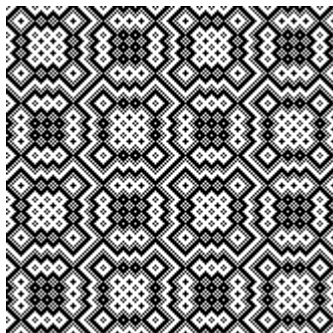
## Thrilling Twills: 8 Shaft M's and W's

[back to catalog](#)

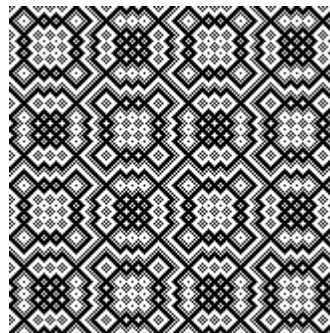
[08sG034.dtx](#) [08sG034.wif](#)



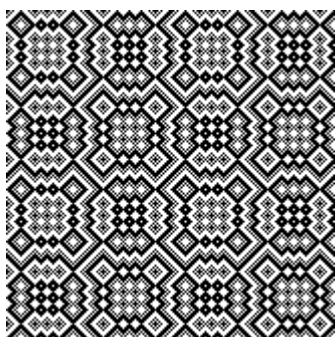
[08sG035.dtx](#) [08sG035.wif](#)



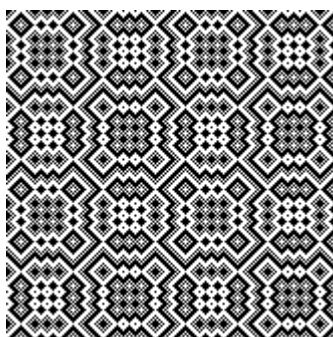
[08sG036.dtx](#) [08sG036.wif](#)



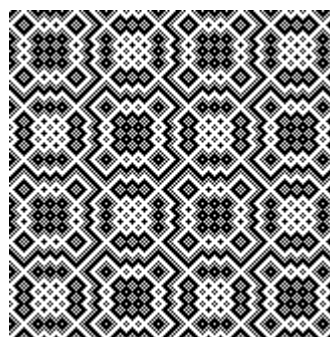
[08sG037.dtx](#) [08sG037.wif](#)



[08sG038.dtx](#) [08sG038.wif](#)



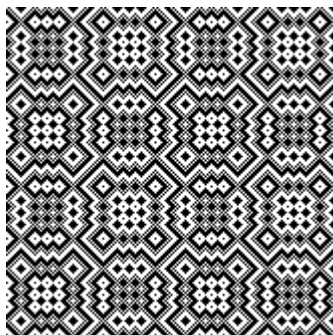
[08sG039.dtx](#) [08sG039.wif](#)



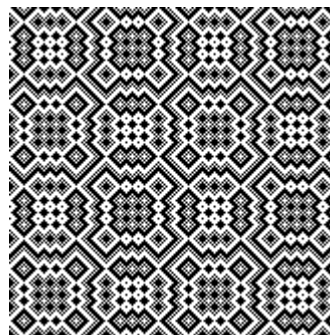
[08sG040.dtx](#) [08sG040.wif](#)



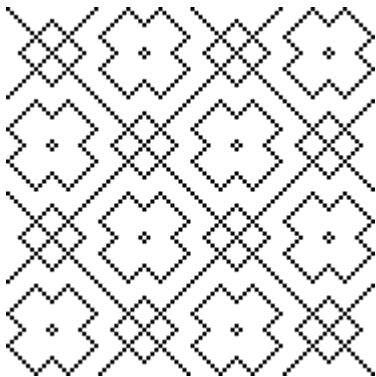
[08sG041.dtx](#) [08sG041.wif](#)



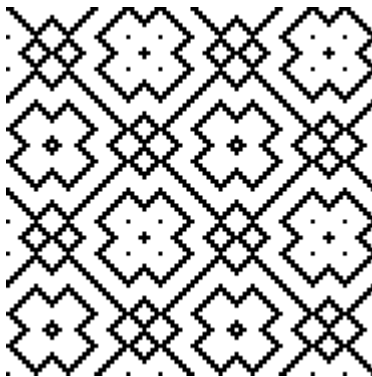
[08sG042.dtx](#) [08sG042.wif](#)



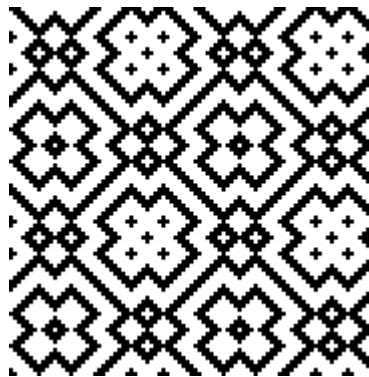
[08sG051.dtx](#) [08sG051.wif](#)



[08sG052.dtx](#) [08sG052.wif](#)



[08sG053.dtx](#) [08sG053.wif](#)





## Thrilling Twills: 8 Shaft M's and W's

[back to catalog](#)

[08sG054.dtx](#)

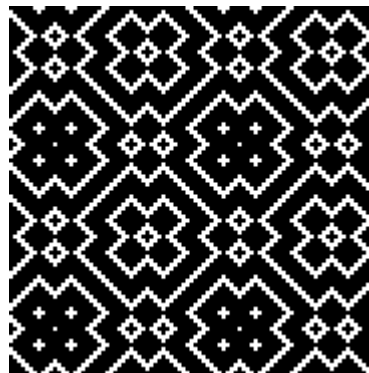
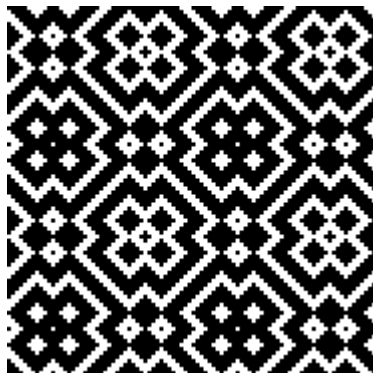
[08sG054.wif](#)

[08sG055.dtx](#)

[08sG055.wif](#)

[08sG056.dtx](#)

[08sG056.wif](#)



[08sG057.dtx](#)

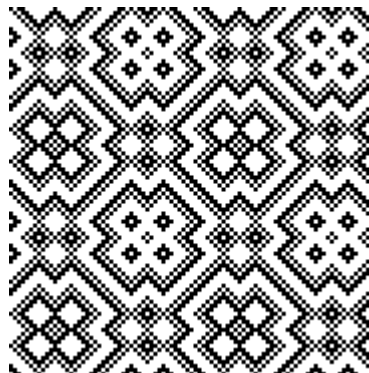
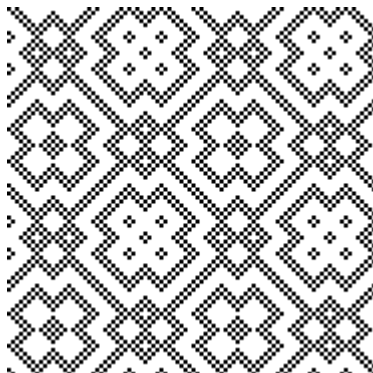
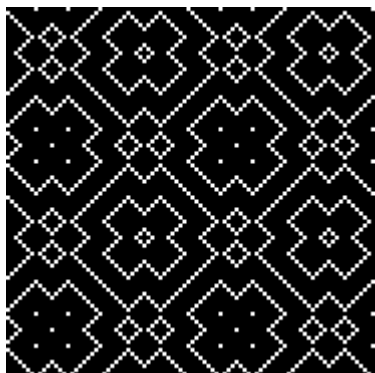
[08sG057.wif](#)

[08sG058.dtx](#)

[08sG058.wif](#)

[08sG059.dtx](#)

[08sG059.wif](#)



[08sG060.dtx](#)

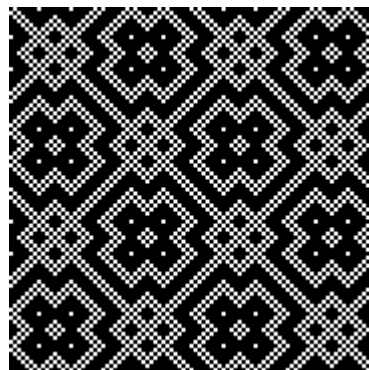
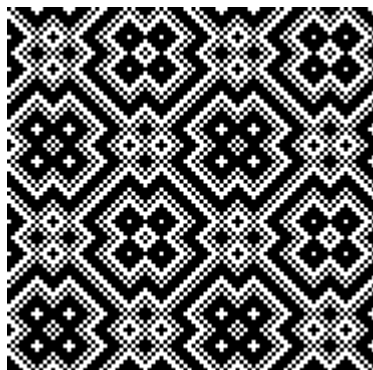
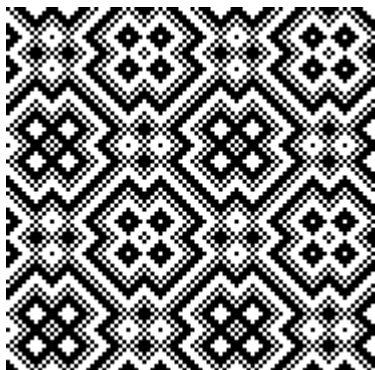
[08sG060.wif](#)

[08sG061.dtx](#)

[08sG061.wif](#)

[08sG062.dtx](#)

[08sG062.wif](#)



## Thrilling Twills: 8 Shaft M's and W's

[back to catalog](#)

[08sG063.dtx](#)

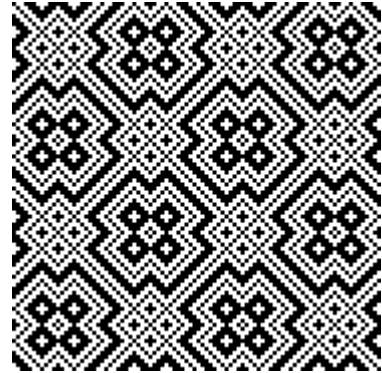
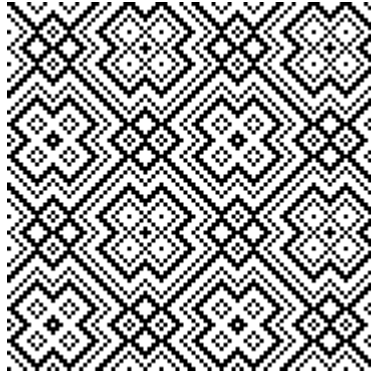
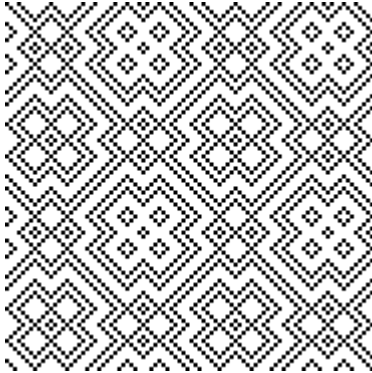
[08sG063.wif](#)

[08sG064.dtx](#)

[08sG064.wif](#)

[08sG065.dtx](#)

[08sG065.wif](#)



[08sG066.dtx](#)

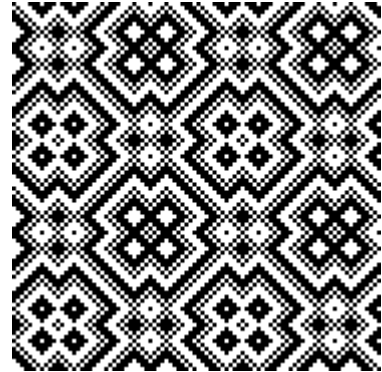
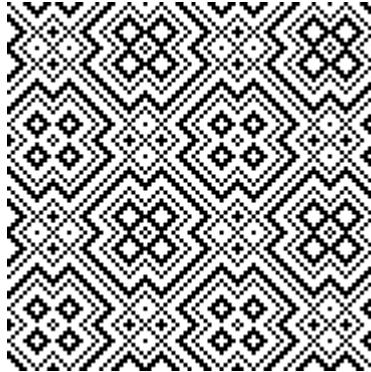
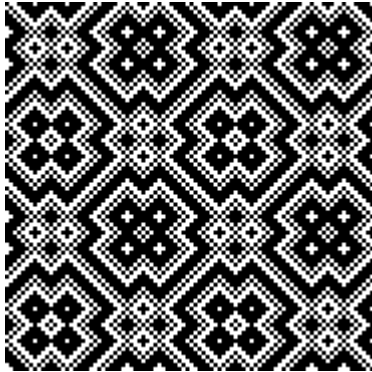
[08sG066.wif](#)

[08sG067.dtx](#)

[08sG067.wif](#)

[08sG068.dtx](#)

[08sG068.wif](#)



[08sG069.dtx](#)

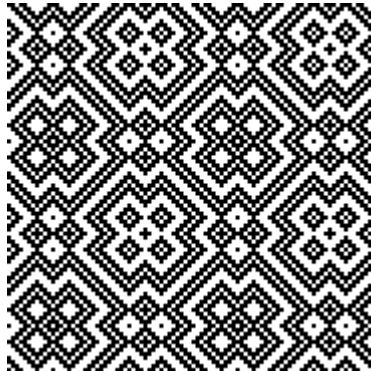
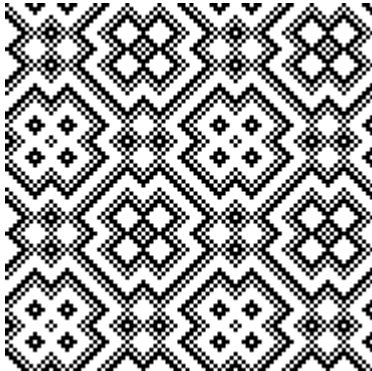
[08sG069.wif](#)

[08sG070.dtx](#)

[08sG070.wif](#)

[08sG071.dtx](#)

[08sG071.wif](#)



## Thrilling Twills: 8 Shaft M's and W's

[back to catalog](#)

[08sG072.dtx](#)

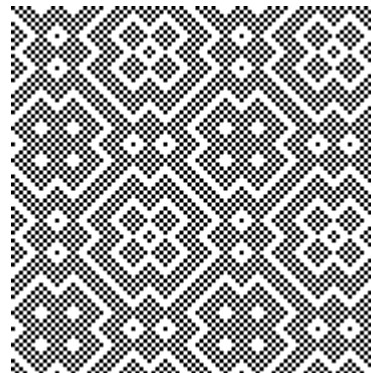
[08sG072.wif](#)

[08sG073.dtx](#)

[08sG073.wif](#)

[08sG074.dtx](#)

[08sG074.wif](#)



[08sG075.dtx](#)

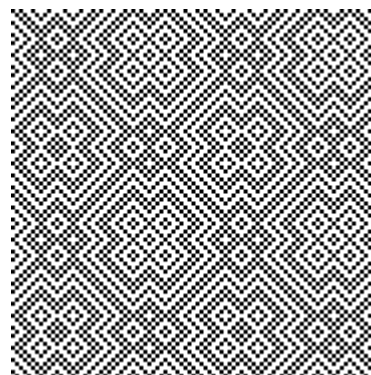
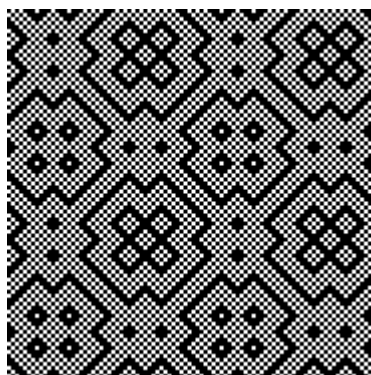
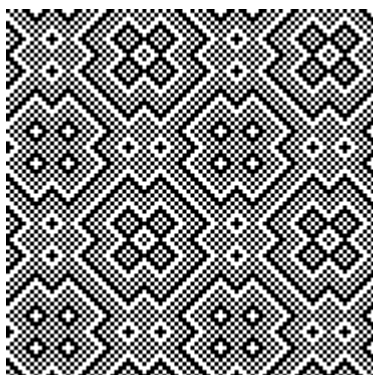
[08sG075.wif](#)

[08sG076.dtx](#)

[08sG076.wif](#)

[08sG077.dtx](#)

[08sG077.wif](#)



[08sG078.dtx](#)

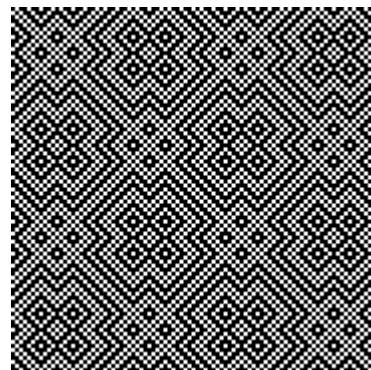
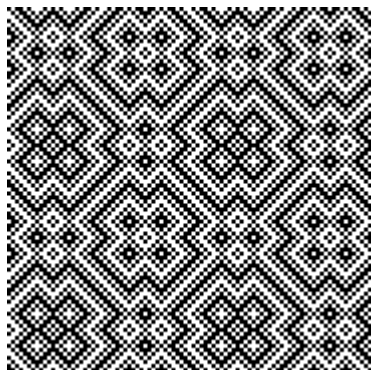
[08sG078.wif](#)

[08sG079.dtx](#)

[08sG079.wif](#)

[08sG080.dtx](#)

[08sG080.wif](#)



## Thrilling Twills: 8 Shaft M's and W's

[back to catalog](#)

[08sG078.dtx](#)

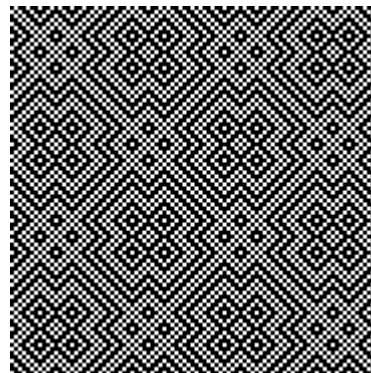
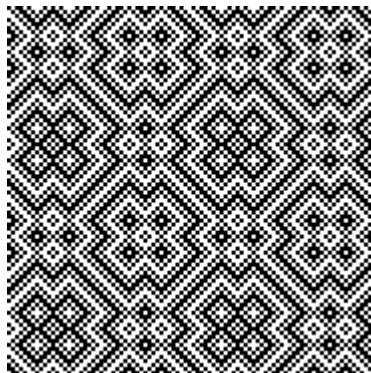
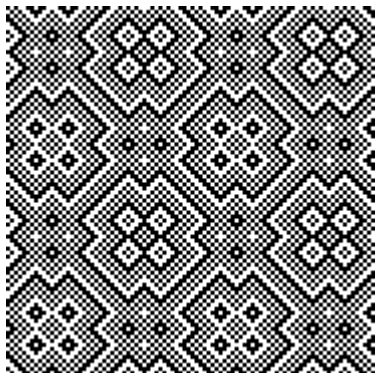
[08sG078.wif](#)

[08sG079.dtx](#)

[08sG079.wif](#)

[08sG080.dtx](#)

[08sG080.wif](#)



[08sG081.dtx](#)

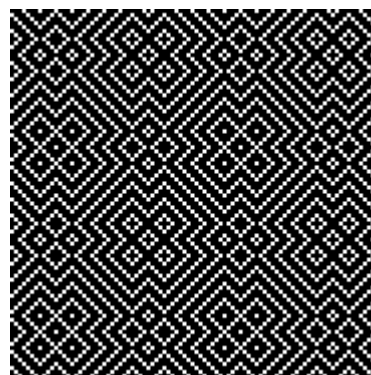
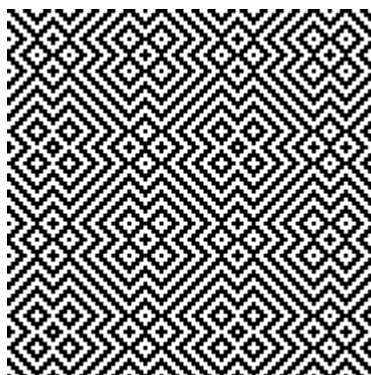
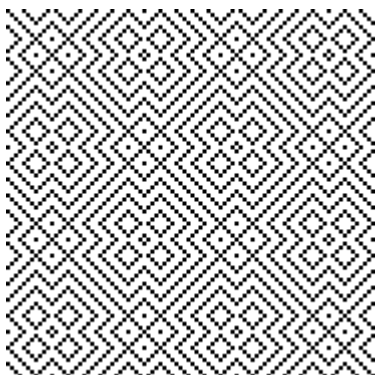
[08sG081.wif](#)

[08sG082.dtx](#)

[08sG082.wif](#)

[08sG083.dtx](#)

[08sG083.wif](#)



[08sG084.dtx](#)

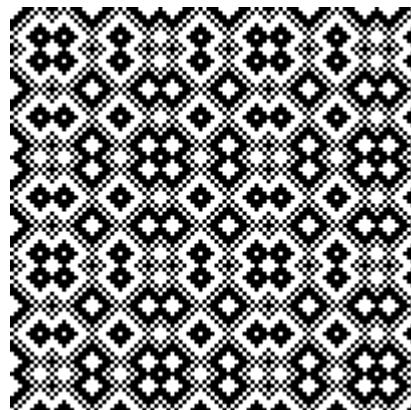
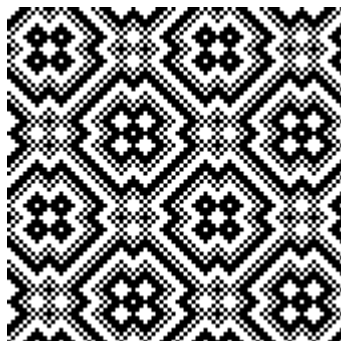
[08sG084.wif](#)

[08sG085.dtx](#)

[08sG085.wif](#)

[08sG086.dtx](#)

[08sG086.wif](#)

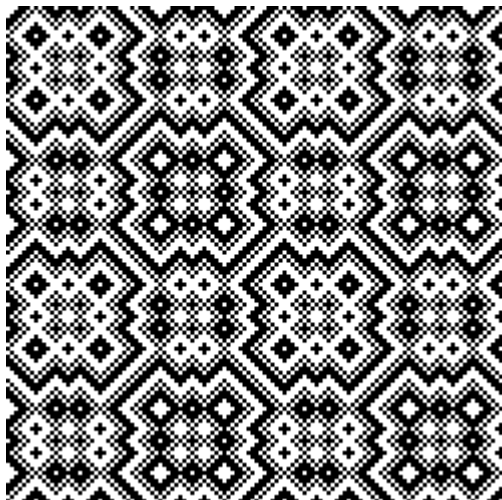




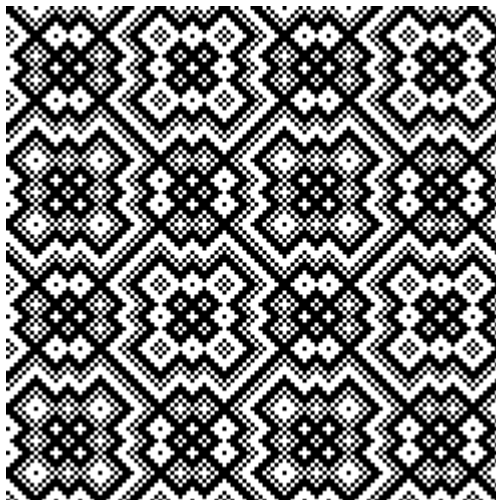
## Thrilling Twills: 8 Shaft M's and W's

[back to catalog](#)

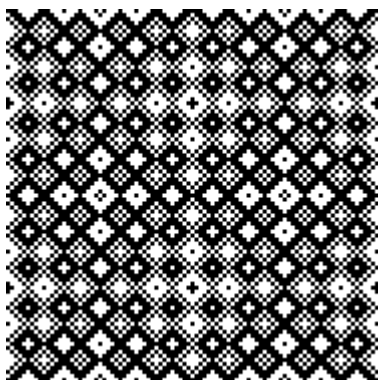
[08sG087.dtx](#) [08sG087.wif](#)



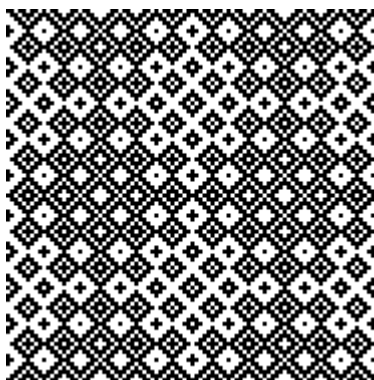
[08sG088.dtx](#) [08sG088.wif](#)



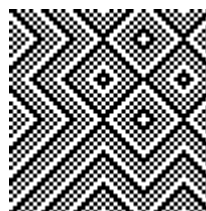
[08sG090.dtx](#) [08sG090.wif](#)



[08sG091.dtx](#) [08sG091.wif](#)



[08sG089.dtx](#) [08sG089.wif](#)



[08sG092.dtx](#) [08sG092.wif](#)

